



38 Meadowvale Crescent, Nottingham, NG11 9LY

£1,200 Per Month

Fully refurbished three bedroom mid terraced property in the desirable location of Clifton.

The accommodation comprises of spacious kitchen fitted with units and appliances include an oven and hob, good sized living / dining room with feature fireplace, three well sized bedrooms to the first floor & family bathroom with modern white three piece suite

The property benefits from, large private rear garden, driveway and is completed to a high standard throughout.

This property is ideally located close to local amenities, schools, parks, and excellent transport links, making it perfect for families and commuters alike.

Property

Hallway



Access the welcoming entrance hall via UPVC door. Having stairs rising to the first floor, wood effect grey herringbone Limonium, central heating radiator, coat hooks and under the stairs storage.

Downstairs WC 5'02 x 2'08 (1.57m x 0.81m)

Comprising W.C, Central heating radiator, wood effect grey herringbone Limonium flooring complete to a modern finish.

Kitchen 9'04 x 9'00 (2.84m x 2.74m)



Newly fitted kitchen with grey shaker style cabinets, space for washing machine and under the counter fridge freezer, Beko fan oven with gas hob and extractor fan. Complete with white metro tiled backsplash, grey herringbone effect Limonium flooring, UPVC window overlooking the rear elevation and door leading to the back garden. The kitchen also benefits from a pantry cupboard and fitted blinds.

Living / Diner



Complete with electric fire with statement fireplace,

gas central heated radiator, grey carpets, bay window to front elevation, window and UPVC door leading to garden on the rear elevation with fitted blinds.

Master Bedroom 11'04 x 13'04 (3.45m x 4.06m)



With grey carpet, UPVC bay window, gas central heating radiator and useful alcove wardrobe. Complete with blinds.

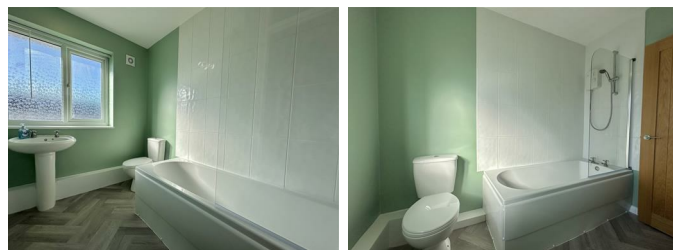
Bedroom 2 13'07 x 8'04 (4.14m x 2.54m)

With grey carpet, UPVC window, gas central heating and cupboard housing the combi boiler. Complete with blinds.

Bedroom 3 8'05 x 10'08 (2.57m x 3.25m)

With grey carpet, UPVC window and gas central heating. Complete with blinds.

Bathroom 6'05 x8'07 (1.96m x2.62m)



Bathroom suite with electric shower over bath with glass screen, mixer bath taps, WC, pedestal sink, wood effect grey herringbone Limonium and central heating radiator.

Upstairs Hallway

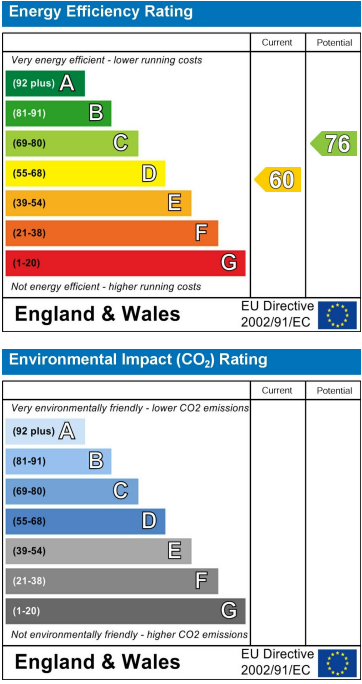
With grey carpet, gas central heating radiator and a useful airing cupboard with shelf.

Floor Plan

Area Map



Energy Efficiency Graph



These particulars, whilst believed to be accurate are set out as a general outline only for guidance and do not constitute any part of an offer or contract. Intending purchasers should not rely on them as statements of representation of fact, but must satisfy themselves by inspection or otherwise as to their accuracy. No person in this firms employment has the authority to make or give any representation or warranty in respect of the property.